

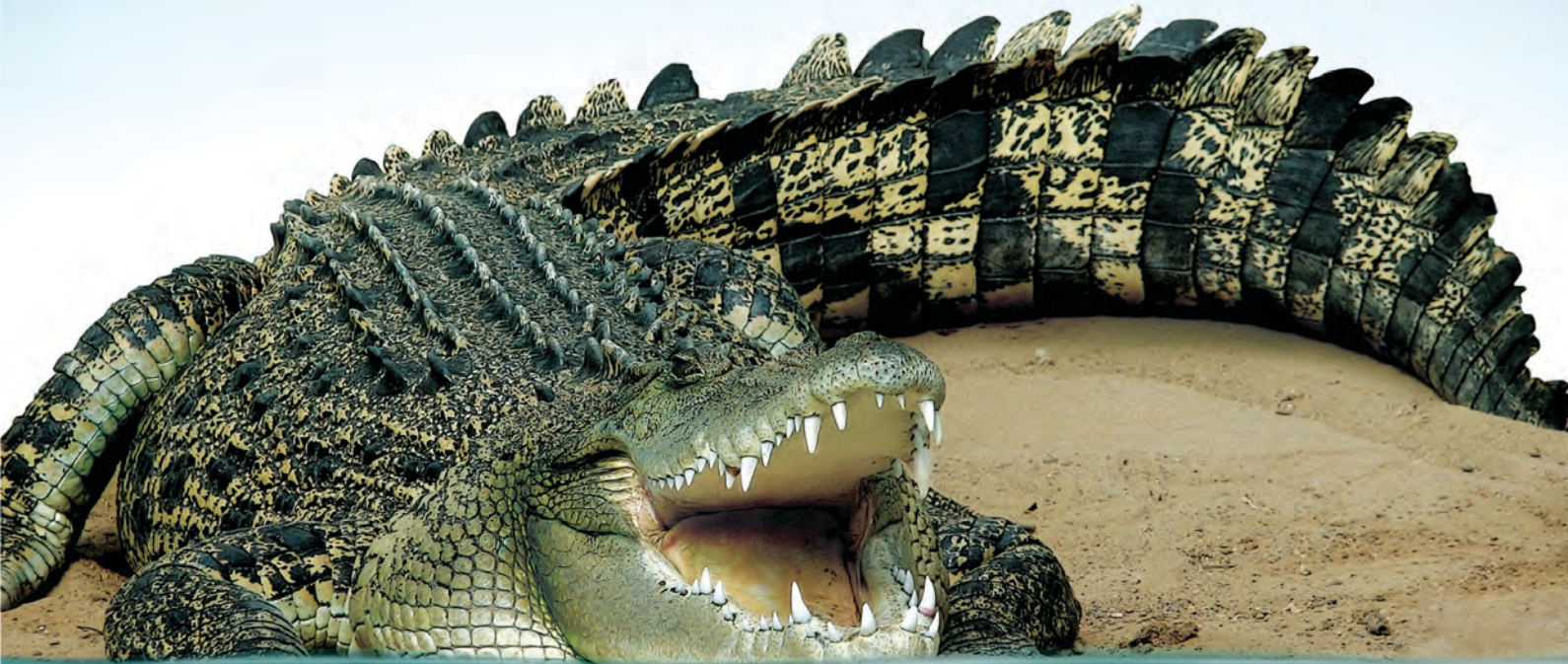


**onga**<sup>®</sup>

Pentair Water

# BUILT TOUGH

...Here to stay



## ECO800™

VARIABLE SPEED POOL PUMP



The new Onga Eco800 variable speed pool pump is specifically designed to deliver unmatched durability, performance & efficiency, all in one sexy package.

## DURABILITY



### BUILT TOUGH...

Being precision engineered and assembled in Australia under the highest standards and by using the latest in pool pump technology materials, the eco800 is built like a tank.

**F**ault protected motor prevents damage by automatically shutting down the motor in the event of a locked rotor, under voltage, over voltage or over current condition and will automatically reduce the speed during an over temperature condition.

**A** heavy-duty construction and a motor rated for continuous operation make the Eco800 a tough, long-lasting performer. The high-capacity trap holds a large amount of debris, so you clean less often.

**C**onstructed of our durable, thermoplastic, composite resin, so you can be sure it will stand up to the harshest conditions.

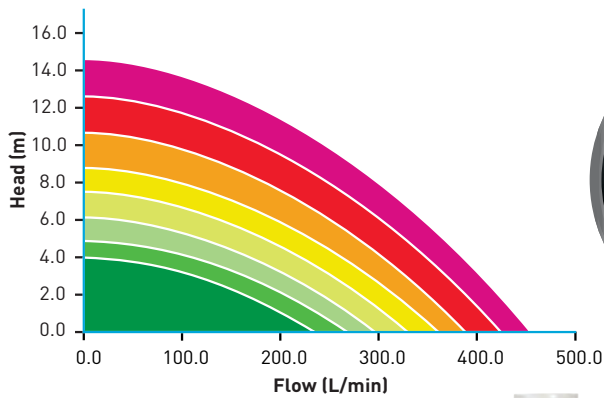


## PERFORMANCE



### MADE TO EXCEL...

The Eco800 delivers unparalleled performance in all speeds making it ideal for a range of applications, from the smallest to the largest domestic pool.



# ECO800™

## VARIABLE SPEED POOL PUMP

### FEATURES:

- Three programmable speed settings.
- High-tech axial flux permanent magnet motor.
- 8 Star energy rating.
- Reduce electricity costs by up to \$1000 per year.
- Lower carbon emissions.
- Super quiet operation.



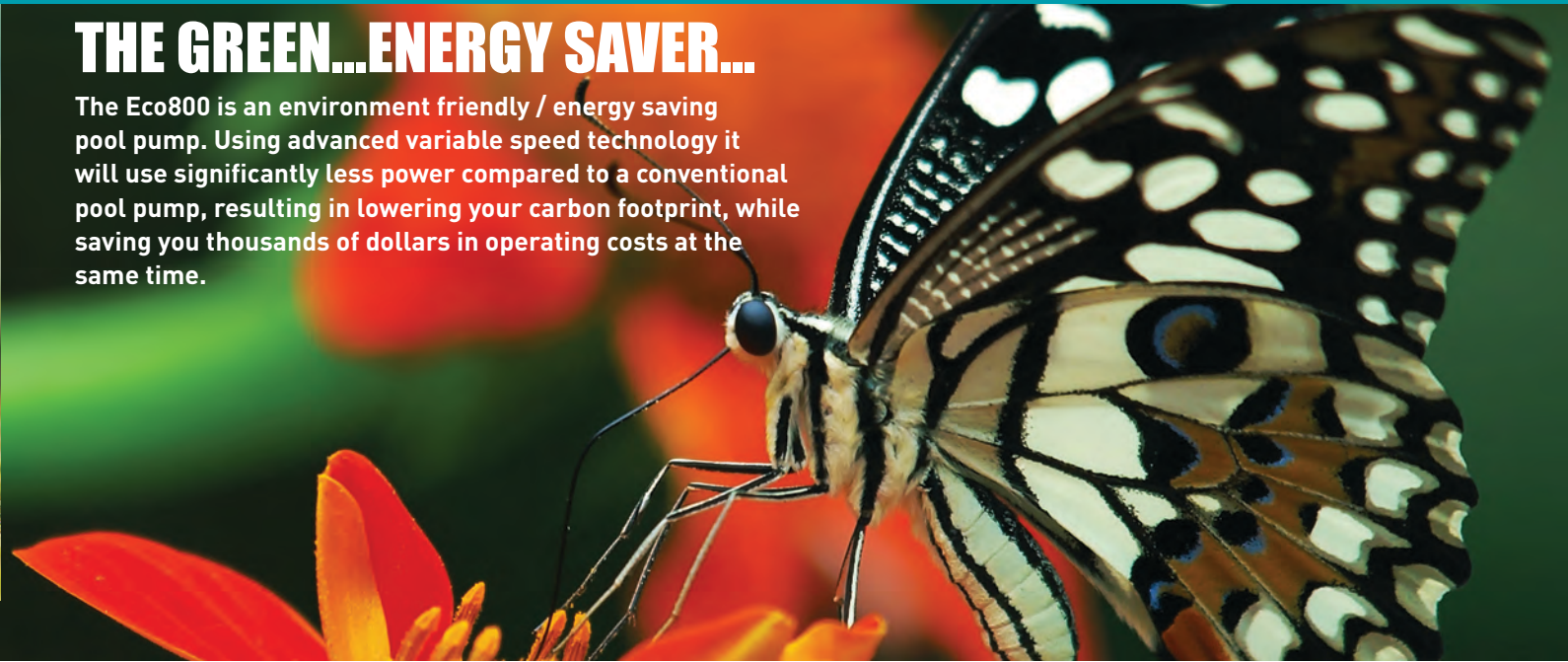
# WITH RESPECT TO THE ENVIRONMENT

## EFFICIENCY



### THE GREEN...ENERGY SAVER...

The Eco800 is an environment friendly / energy saving pool pump. Using advanced variable speed technology it will use significantly less power compared to a conventional pool pump, resulting in lowering your carbon footprint, while saving you thousands of dollars in operating costs at the same time.

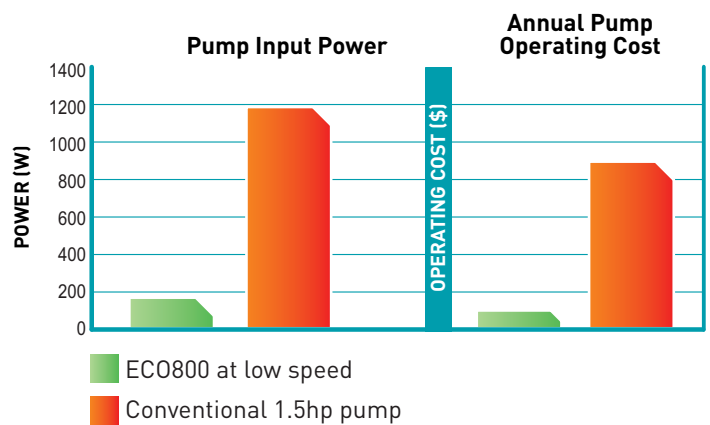


### THE BENEFITS OF VARIABLE SPEED

The Onga Eco800 uses an axial-flux, brushless, DC motor which offers high efficiency levels compared with conventional induction motors. Combined with the latest in electronic control, this allows the motor/pump to run at varying speeds.



The multiple speeds offered by the Eco800 enable the pump to run slower and consume less energy but still have the ability to run at full speed if required by the application.



SLASH ENERGY USE  
BY UP TO **70%**  
& SAVE



Other Pumps		Onga Eco800		
Existing Pump	Annual Operating Cost*	Annual Operating Cost	Annual Saving	Annual Reduction in CO2 Emissions
1.5hp	<b>\$912</b>	\$70	\$842	3370kg
1.0hp	<b>\$657</b>	\$70	\$587	2246kg

\* Calculation based on typical pump performance data with running time of 8hrs per day, 365 days per year and \$0.25 per kW/hr. Eco800 cost based on running time for 1 turnover of a 75,000L pool and off-peak rates \$0.12 kW/hr.



**Head Office**

Pentair AU/NZ: 1-21 Monash Drive,  
Dandenong South, Vic 3175

**Australia**

National Customer Service: Phone: 1300 137 344  
Fax: 1800 006 688  
National Dealer Locator: Phone: 1800 664 266  
Email: [au.sales@pentair.com](mailto:au.sales@pentair.com)  
Web: [www.pentair.com.au](http://www.pentair.com.au)

**New Zealand**

National Customer Service: Phone: 0800 654 112  
Fax: 0800 806 642  
National Dealer Locator: Phone: 0800 664 269  
Email: [nz.sales@pentair.com](mailto:nz.sales@pentair.com)  
Web: [www.pentair.co.nz](http://www.pentair.co.nz)

**International Australia/New Zealand**

Phone: +61 3 9709 5800  
Fax: +61 3 9709 5888

Display, publication, modification or distribution is strictly prohibited without the prior written permission of Pentair Water Pty Ltd.

**Disclaimer:** Every endeavour has been made to publish the correct details in this publication. No responsibility will be taken for errors, omissions or changes in product specifications. Pentair reserves the right to change specifications.

pumps / filters / heaters / heat pumps / automation / lighting / cleaners / sanitizers / water features / maintenance products